

# THREE DOOR PREP TABLE

MF.GPZ225A (includes rail)



## Specifications - 3 Door Prep

Classification	Refrigerator
Refrigerant	R404A
Volts/Hz	115/60
Phase	1
Full Load (amps)	6.8
Temperature	34°F - 55°F
HP	1
Shelves	N/A
Guides	18
Weight	661 lbs.
Crated Weight	786 lbs.
Weight w/ Rail	806 lbs.
Crated w/ Rail	931 lbs.
Cubic Feet	20

## STANDARD FEATURES

- 304 S/S Interior & Exterior
- Granite Worksurface
- Casters Standard
- Digital Controller
- Self-Closing Doors
- 2 3/8" Polyurethane Insulation
- Self-Contained Refrigeration
- 4 Plastic Dough Trays Per Door
- Optional Granite Backsplash & Sides

## DIMENSIONS

Regular: 87.75"W x 31.5"D x 31.25"H  
With Packing: 89.75"W x 33.5"D x 44.25"H

*Dimensions are rounded up to the nearest 1/8." Prep tables include 2 year warranty on parts and labor, and 3 year warranty on the compressor (U.S. only). All preps and condiment rails are Freight Class 92.5.*

# THREE DOOR PREP TABLE

MF.GPZ225A (includes rail)

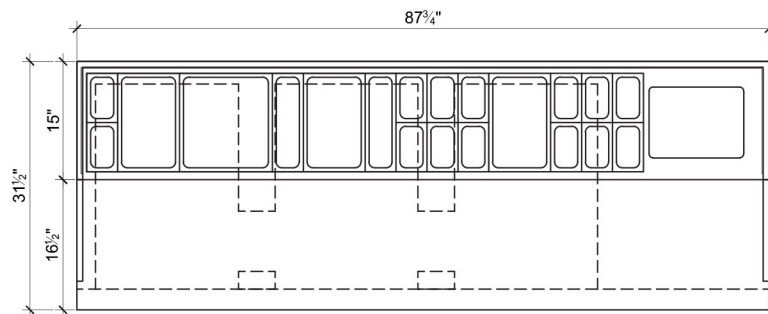


Intertek  
4001385  
012010CFMC

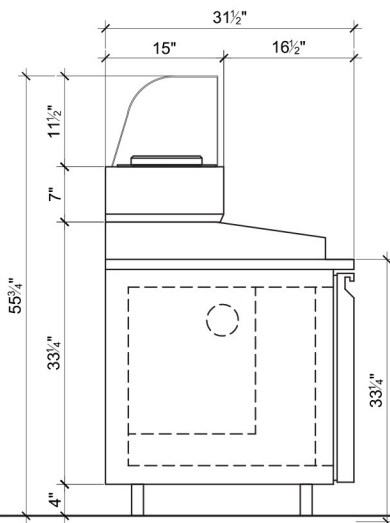


## DIMENSIONS

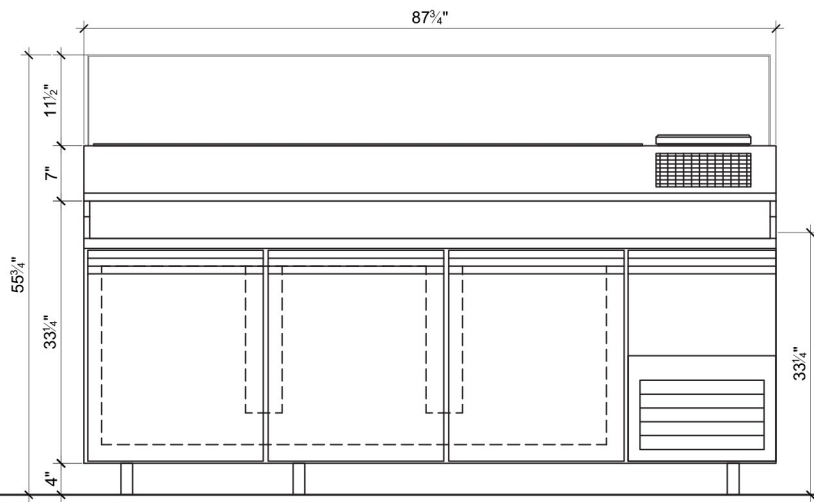
Regular: 87.75"W x 31.5"D x 31.25"H  
With Packing: 89.5"W x 33"D x 44.25"H  
(measurements do not include rail)



Top View



Side View



Front View

*Dimensions are rounded up to the nearest 1/8." Prep tables include 2 year warranty on parts and labor, and 3 year warranty on the compressor (U.S. only). All preps and condiment rails are Freight Class 92.5.*